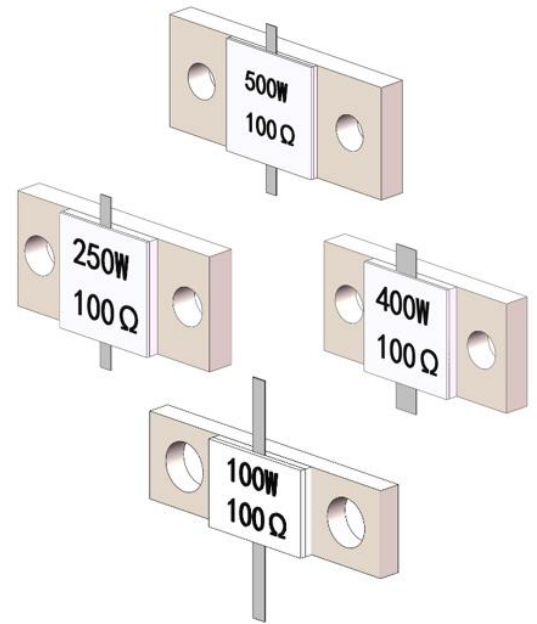
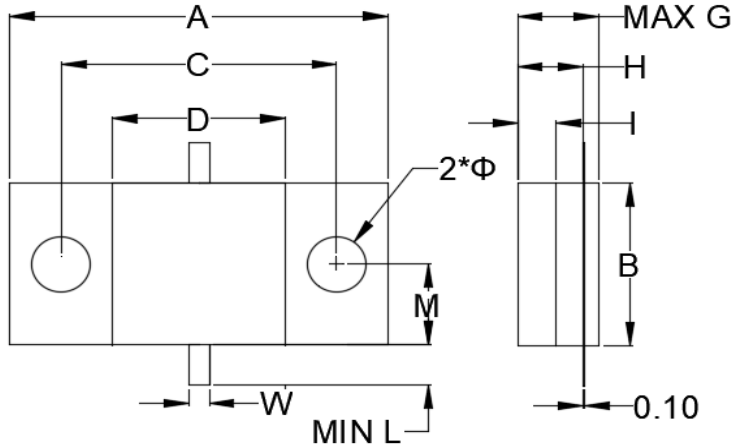


# 双引线双孔法兰电阻 (Flanged Resistors 100W/150W/200W/250W/400W/500W)

## 主要技术指标 (General Specifications)

- 基片 (Material): 氧化铍 (BeO)
- 电阻材料 (Resistive Material): 厚膜 (Thick Film)
- 引线 (Tabs): 镀银铍铜合金 (Silver Plated Beryllium Copper)
- 盖板 (Cover): 氧化铝 (Al2O3)
- 法兰 (Flange): 镀镍铜 (Nickel Plated Copper)
- 阻值 (Resistance): 0.5Ω - 1MΩ

## 产品规格 (Product Reference)

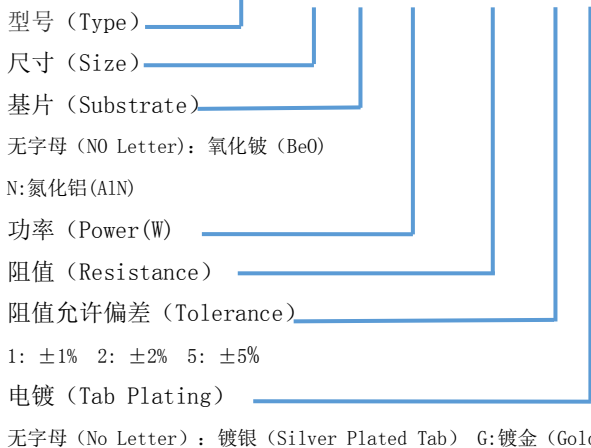


型号 Model	功率 Power(W)	外形尺寸 Dimensions										
		A	B	C	D	G	H	I	L	M	W	Φ
RPR200	100/150	0.787	0.236	0.560	0.354	0.150	0.105	0.040	0.200	0.115	0.040	0.130
		[20.00]	[6.00]	[14.22]	[9.00]	[3.81]	[2.67]	[1.02]	[5.08]	[2.92]	[1.02]	[3.30]
RPR250	200/250	0.975	0.375	0.725	0.375	0.210	0.168	0.060	0.125	0.187	0.060	0.125
		[24.77]	[9.53]	[18.42]	[9.53]	[5.33]	[4.27]	[1.52]	[3.18]	[4.75]	[1.52]	[3.18]
RPR280	400	1.100	0.500	0.800	0.500	0.250	0.171	0.120	0.125	0.250	0.120	0.170
RPR280	500	1.100	0.500	0.800	0.500	0.250	0.171	0.060	0.125	0.250	0.060	0.170
		[27.94]	[12.70]	[20.32]	[12.70]	[6.35]	[4.34]	[1.52]	[3.18]	[6.35]	[1.52]	[4.32]
RPR320	500	1.250	0.500	0.800	0.500	0.210	0.168	0.060	0.125	0.250	0.060	0.160
		[31.75]	[12.70]	[22.23]	[12.70]	[5.33]	[4.27]	[1.52]	[3.18]	[6.35]	[1.52]	[4.06]

尺寸单位为英寸[毫米] (Dimensions are in inches[mm]); 公差为: .xxx=±0.010 .XX=±0.015

## 订货指南 (Ordering Information)

例 (Example): RPR 726 N-10W -100 -5 G



## 降功耗曲线 (Power Derating)

