

QWCA-15-1

WR-15 to 1.0mm

Features:
* Low VSWR

Applications:
* Wireless
* Transmitter
* Laboratory Test
* Radar

Electrical

Frequency:	50~75GHz
VSWR:	1.35 max.
Insertion Loss:	0.8dB max.
Impedance:	50Ω

Mechanical

RF Connectors:	1.0mm
Interface:	WR-15
Flange:	UG-385/U
Material:	Gold plated brass
Outer Conductor:	Passivated stainless steel
Dielectric:	CPS
Inner Conductor:	Gold plated beryllium copper

How To Order

QWCA-15-X-Y

X: Connector type.

Y: End launch: E, Right angle: R.

Connector naming rules:

1F - 1.0mm Female (Outline A)

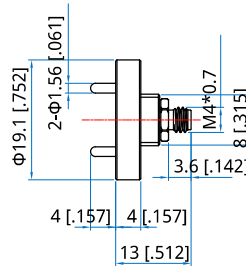
1 - 1.0mm Male (Outline B)

Examples:

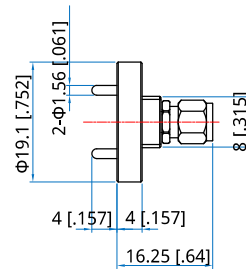
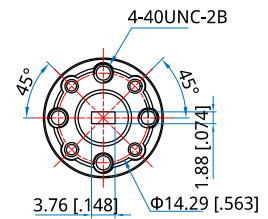
To order a waveguide to coax adapter, WR-15 to 1.0mm male, end launch, specify QWCA-15-1-E.

Customization is available upon request.

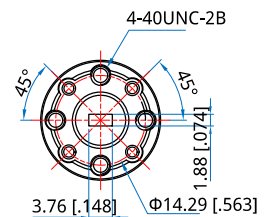
Outline Drawings



Outline A



Outline B



Unit: mm [in]

Tolerance: $\pm 0.2\text{mm} [\pm 0.008\text{in}]$