

QC-8-FA-086-1

DC~40GHz, Female, Panel Mount

Features:
* Low VSWR

Applications:
* Wireless
* Radar
* Instruments
* Electronics



Electrical

Frequency: DC~40GHz
Impedance: 50Ω
VSWR: 1.25 typ.

Mechanical

Mating Cable: QA220, QH280, QK086, QF086, QE086, QD086
Mating Cable Connector: QC-8-MA-086-1
Conductor: Black anodizing of aluminum
Connector Gender: Female
Mounting Type: Panel mount

Environmental

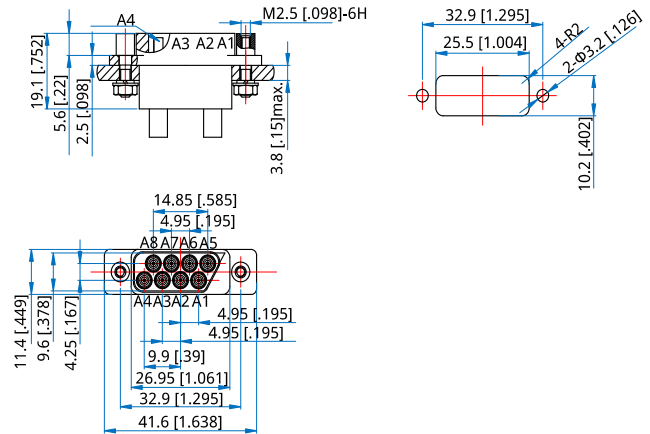
Temperature: -40~+125°C

How To Order

QC-8-FA-086-1

Customization is available upon request.

Outline Drawings



Unit: mm [in]

Tolerance: ±0.2mm [±0.008in]